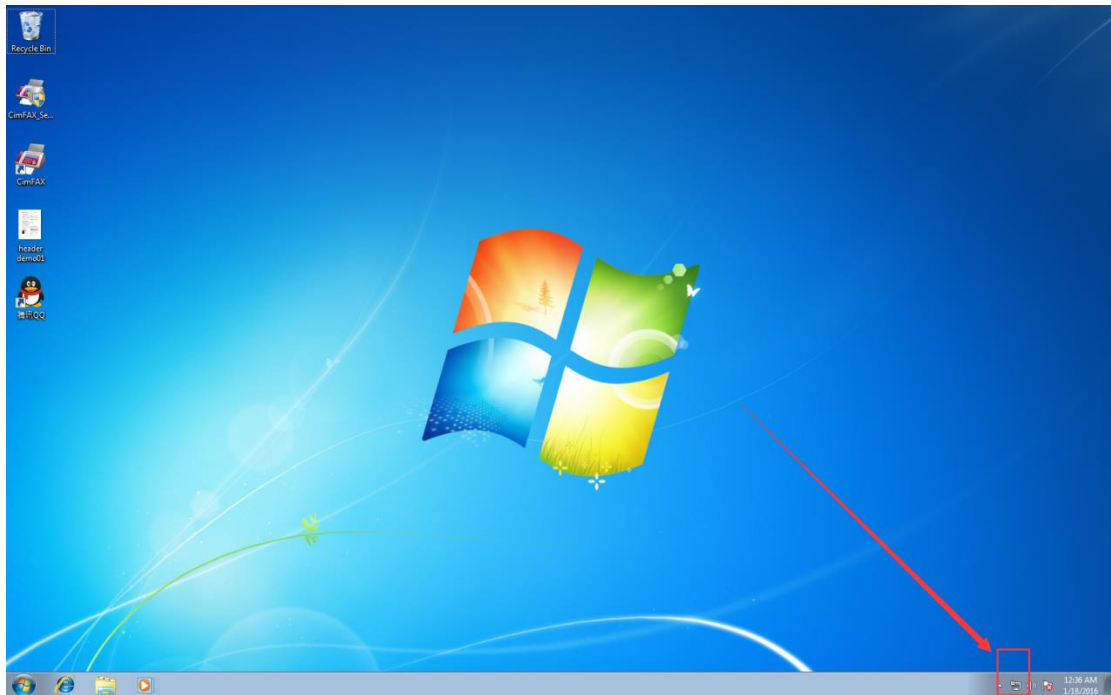
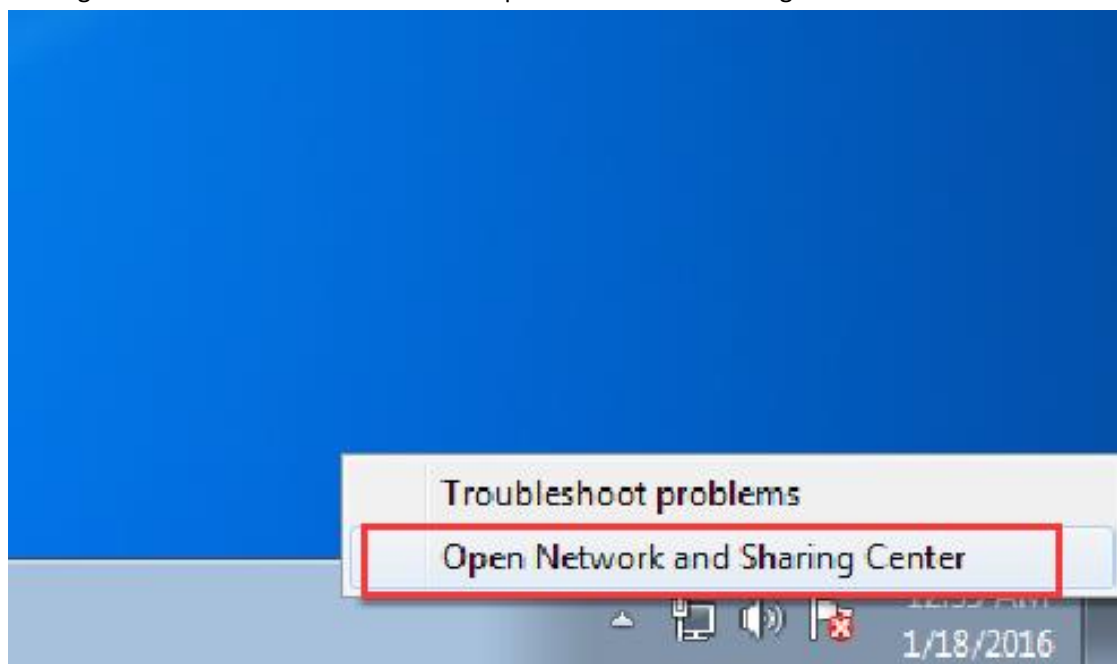


Instructions for Server Not Found (Computer and CimFAX Not on the Same Network)

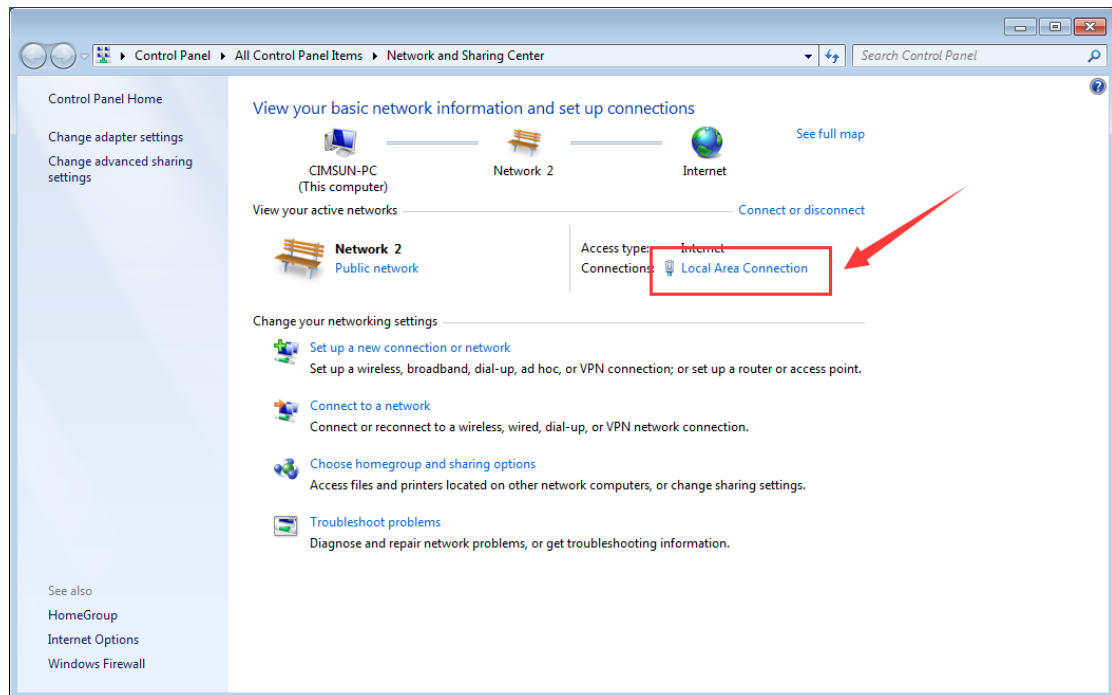
1. If the server is correctly connected and its lights of LINE, POWER, LAN and READY are lit up, but you could not login to it, please find the network icon on the lower right corner.



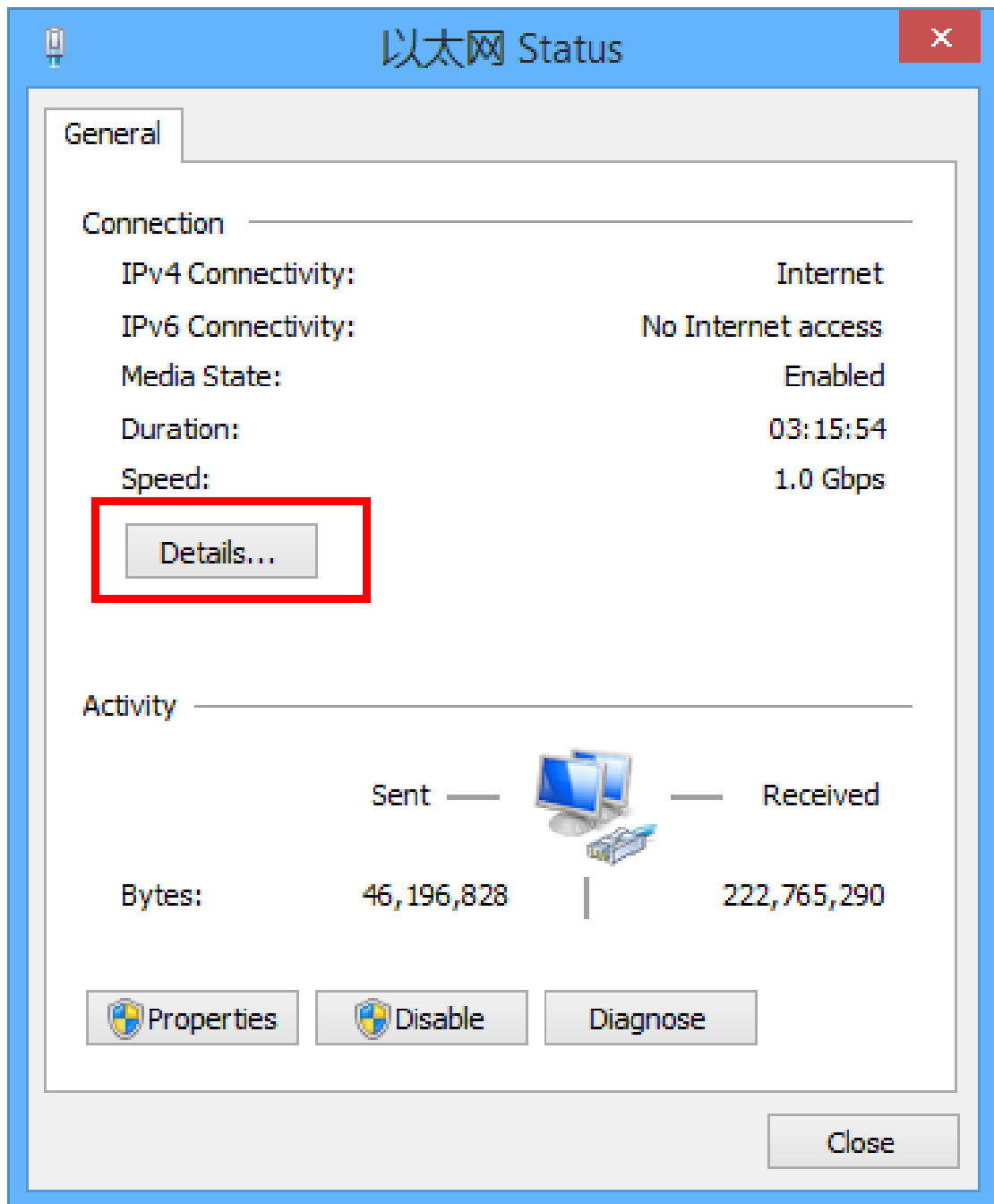
2. Right click the network icon. Choose "Open Network and Sharing Center".



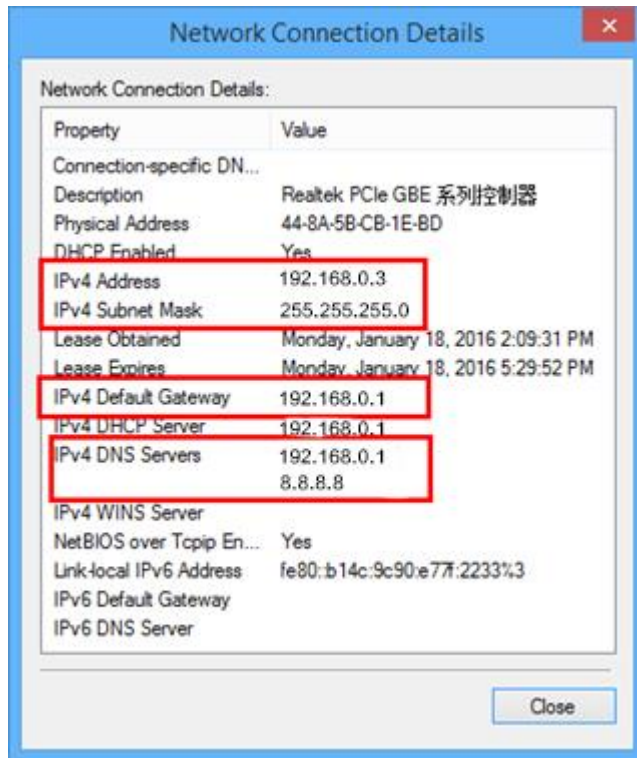
3. Click “Local Area Connection”.



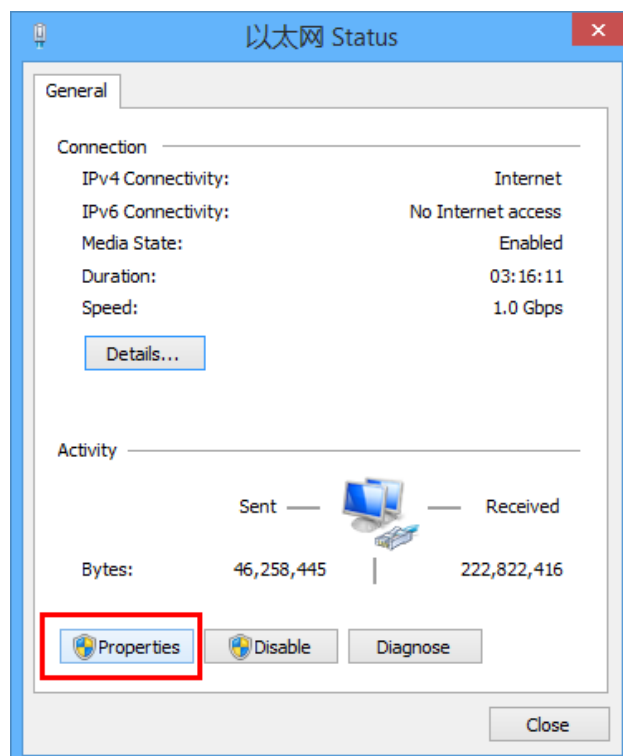
4. Click “Details” on the “Ethernet Status” screen.



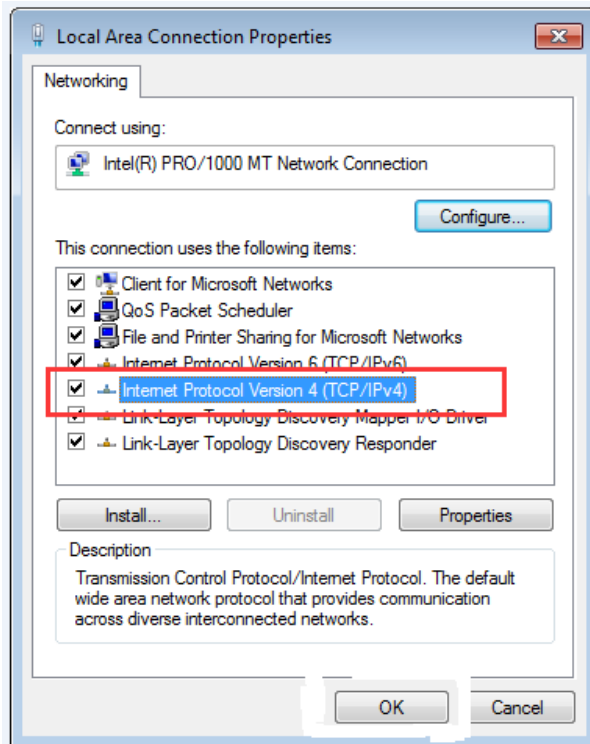
5. Here you can see the IP information of your computer. Write down the IP address, Subnet mask, default gateway and DNS server.



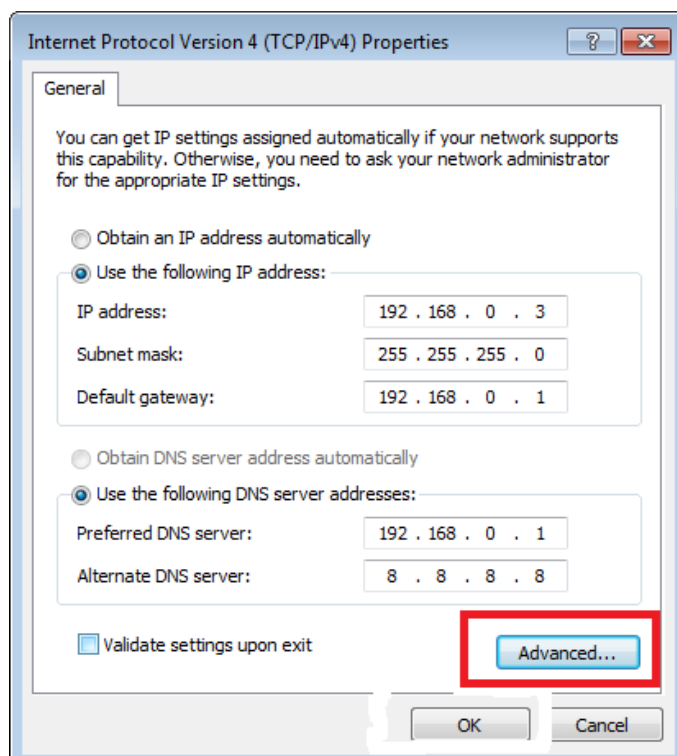
- Go back to the Ethernet Status screen and then click "Properties".



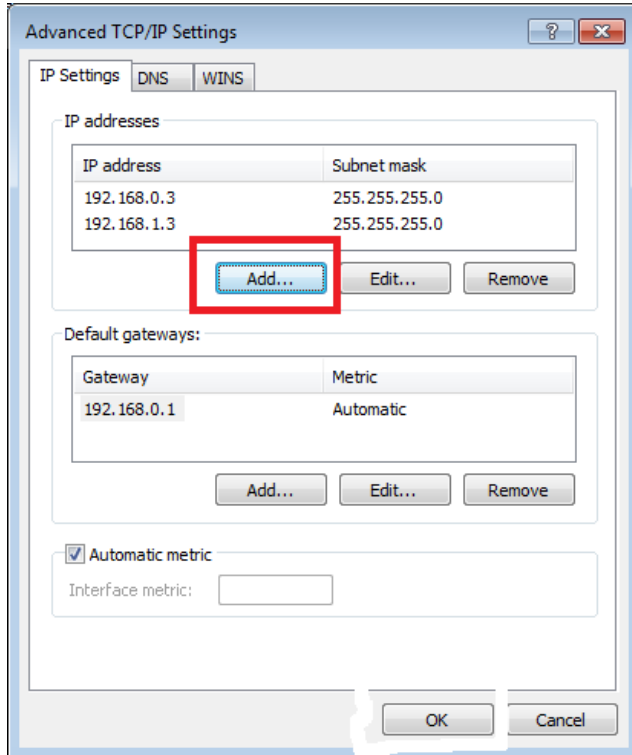
- Check and double click "Internet Protocol Version 4".



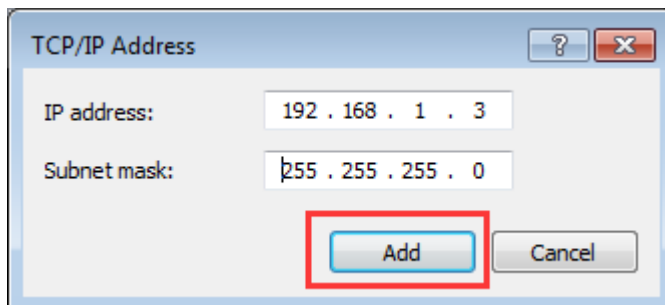
8. Click "Use the following IP address" and "Use the following DNS server addresses" and type in the IP information you wrote down in Step 6. Then click "Advanced".



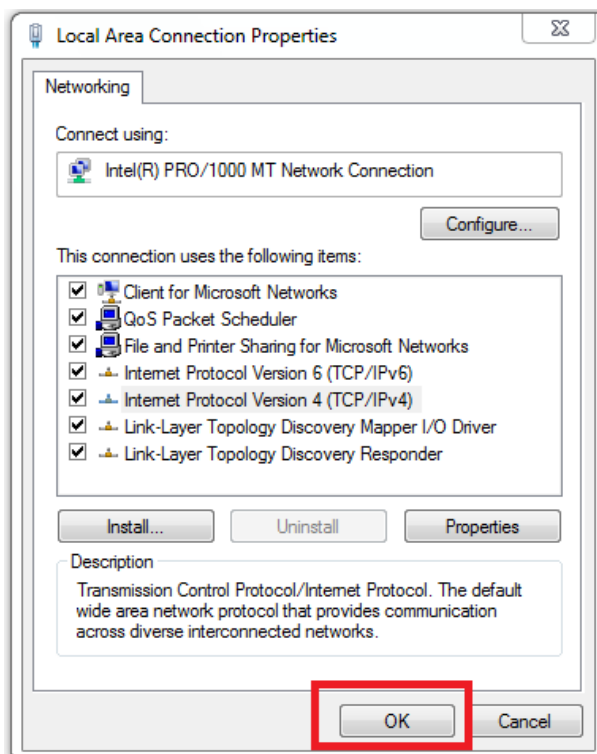
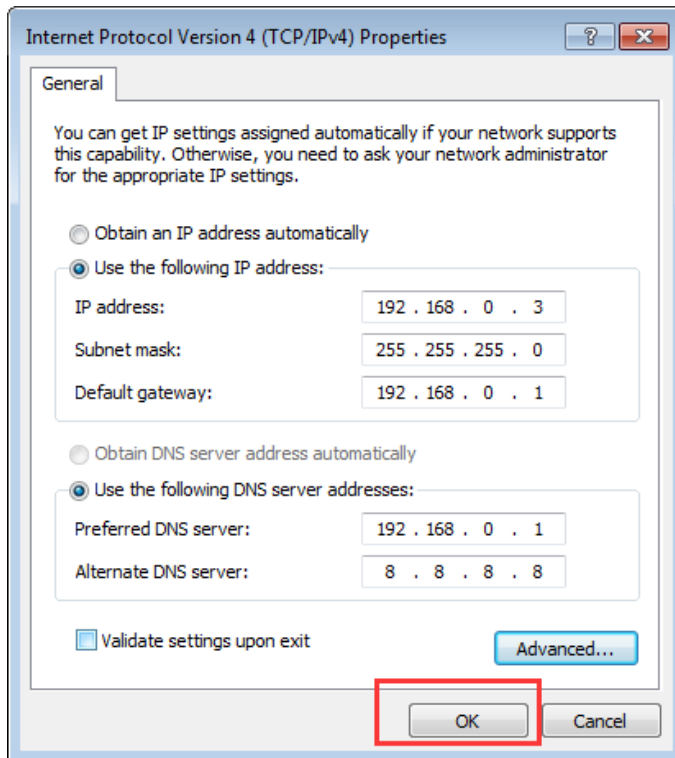
9. Click "Add" in the Advanced TCP/IP Settings screen.



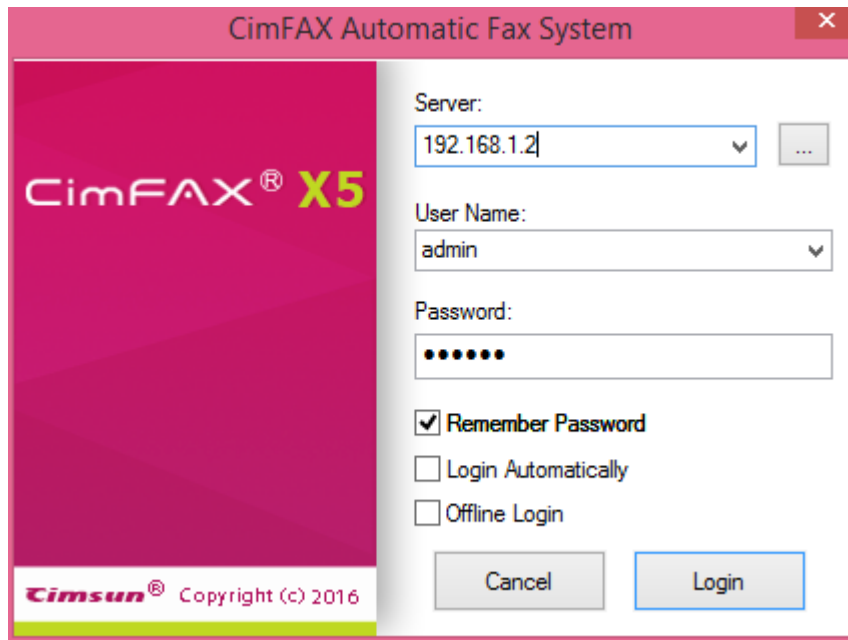
10. Type in "192.168.1.3" in the field of IP address and "255.255.255.0" in the field of subnet mask, and then click "Add".



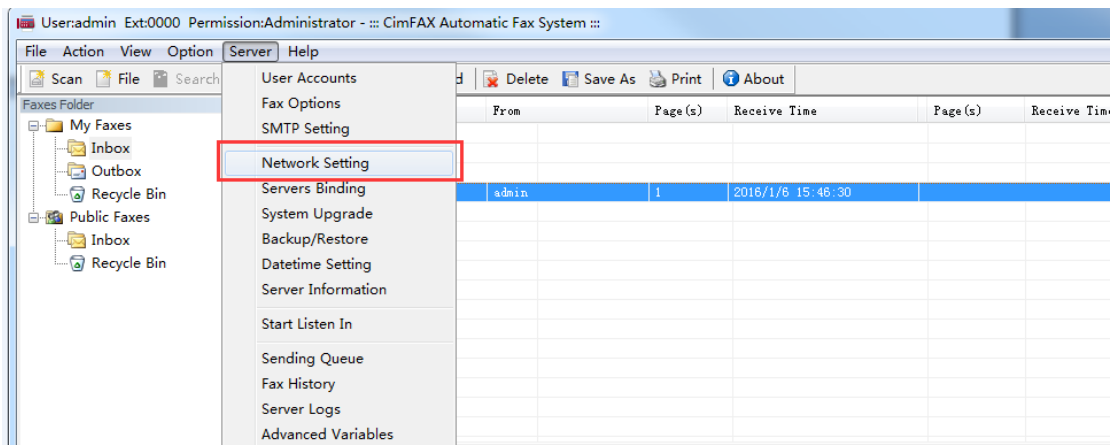
11. Click "OK".



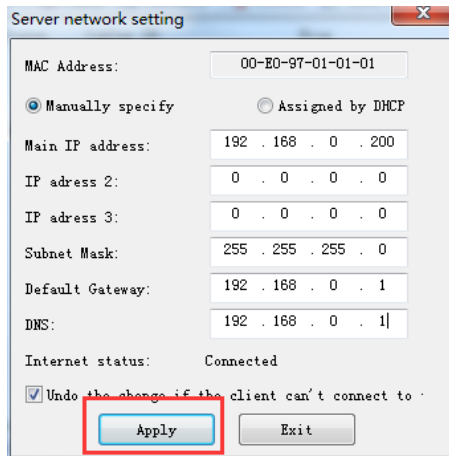
12. Now you can login to the server with the default IP address.



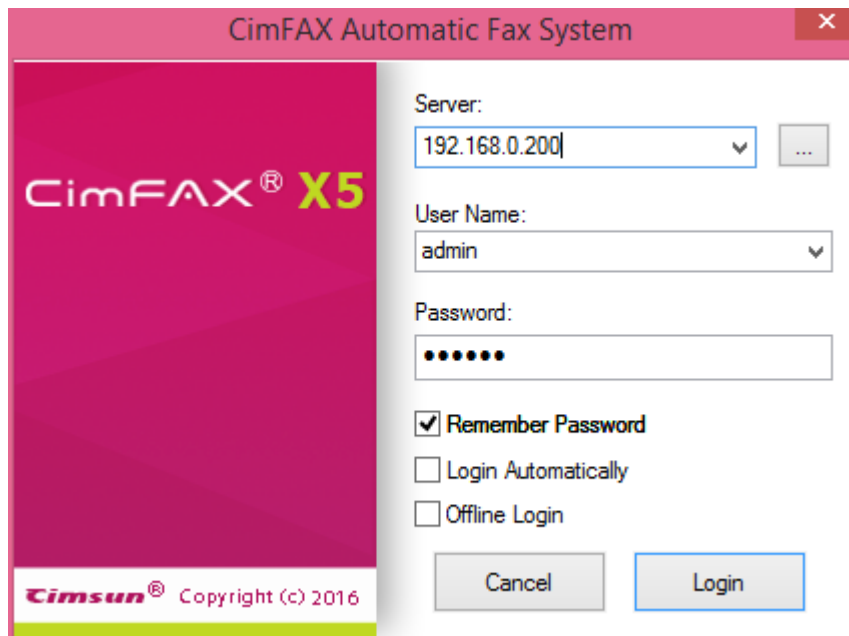
13. To enable all the computers to login to the server, you need to modify the IP address of CimFAX server. Click "Server" on the menu bar of CimFAX client software, and then "Network Settings".



14. Please note that the former three parts of the server's IP address have to be the same as that of your computer. For instance, if your computer IP address is 192.168.0.3, the server's IP address you are going to set shall be 192.168.0.X. X could be any number between 4 and 255. But in case of IP conflicts, we suggest you to choose a number between 200 and 255. We take the example of 192.168.0.200 in the screen shot below. The Subnet mask, default gateway and DNS server are the same as those of your computer. Type in those you have wrote down in Step 6. Click "Apply" after you fill in all the information in the fields.



15. When Network Settings configuration completed, you can login to the server with the new IP address.



16. After all these steps finished, go back to your computer's "Open network and sharing center"> Local area connection> Properties> IPv4, change the IP settings of your computer back to "Obtain an IP address automatically" and "Obtain DNS address automatically".